

## Upper circle h. 570 mm

Upper part of street drain DN450

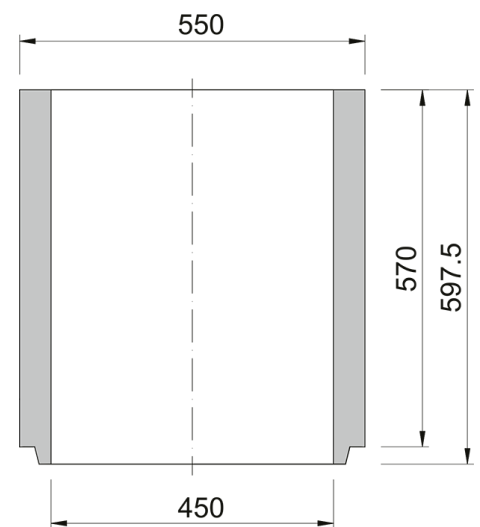
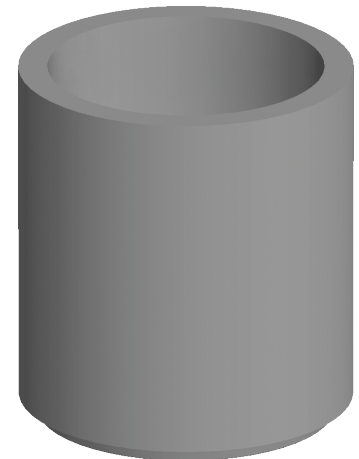


Code	<b>BU5D</b>
Material	<b>Concrete</b>
Weight	<b>107 kg</b>
Norm	<b>DIN1917</b>
Package	<b>8 ks/pal</b>

Street inlet part 5D, height 570mm, according to ČSN EN 1917, concrete strength 40 MPa, chemical resistance XF4  
TBV-Q 450/570/5d

### OTHER:

| wall thickness 45 mm



RAINWATER  
DRAINAGE

