

Medium circle h. 195 mm

Middle part of street drain DN450

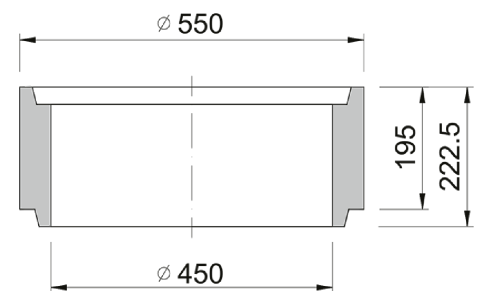
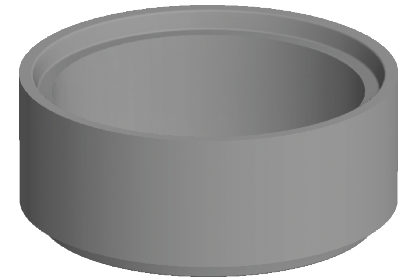


Code	BU46B
Material	Concrete
Weight	37 kg
Norm	DIN1917
Package	24 ks/pal

Street inlet part 6B, height 195 mm, according to ČSN EN 1917, concrete strength 40 MPa, chemical resistance XF4
TBV-Q 450/195/6b

OTHER:

| wall thickness 45 mm



RAINWATER
DRAINAGE

