

Medium round bar height 295 mm

Middle part of street drain DN450

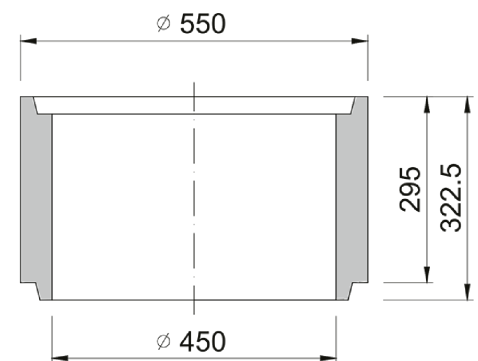
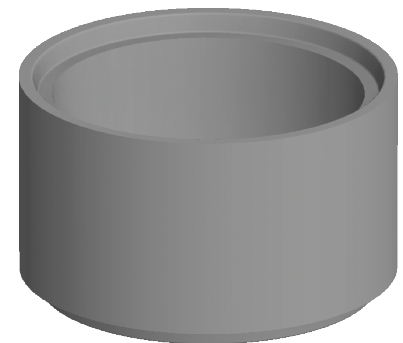


Code	BU46A
Material	Concrete
Weight	56 kg
Norm	DIN1917
Package	16 ks/pal

Street inlet part 6C, height 295 mm, according to ČSN EN 1917, concrete strength 40 MPa, chemical resistance XF4
TBV-Q 450/295/6a

OTHER:

| wall thickness 45 mm



RAINWATER
DRAINAGE

