

## Circular street drain DN450 with outlet

Middle part of street drain DN450

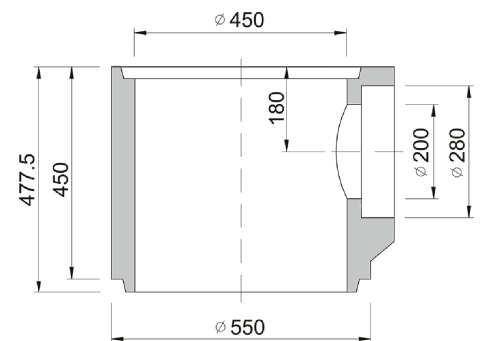


|          |                 |
|----------|-----------------|
| Code     | <b>BU43D</b>    |
| Material | <b>Concrete</b> |
| Weight   | <b>86 kg</b>    |
| Norm     | <b>DIN1917</b>  |
| Package  | <b>8 ks/pal</b> |

Street inlet part 3D, middle part with outlet DN200, height 450 mm, according to ČSN EN 1917, concrete strength 40 MPa, chemical resistance XF4  
TBV-Q 450/450/3d

### OTHER:

- | wall thickness 45 mm
- | possible delivery with adapter for PRAGMA ID



RAINWATER  
DRAINAGE

