

## Bottom part of street gully without outlet concrete part of street gully DN450 - silt pit

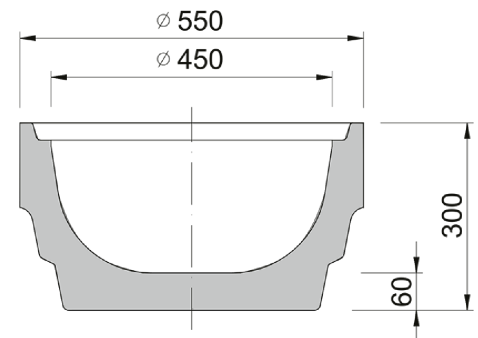
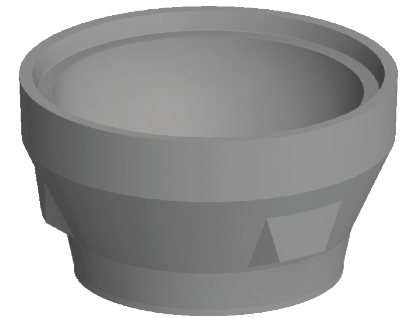


Code	<b>BU42A</b>
Material	<b>Concrete</b>
Weight	<b>70 kg</b>
Norm	<b>DIN1917</b>
Package	<b>16 ks/pal</b>

Street inlet part 2A, bottom part with drain, height 300 mm, according to ČSN EN 1917, concrete strength 40 MPa, chemical resistance XF4  
TBV-Q 450/300/2a

### OTHER:

- Parts for assemblies of street inlets DN450.
- wall thickness 45 mm



RAINWATER  
DRAINAGE SYSTEM

