

## Bottom part of street gully DN450 with outlet

Concrete part with outlet DN200

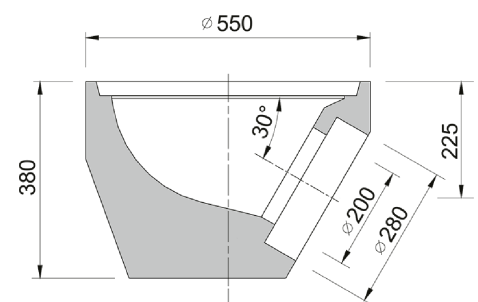
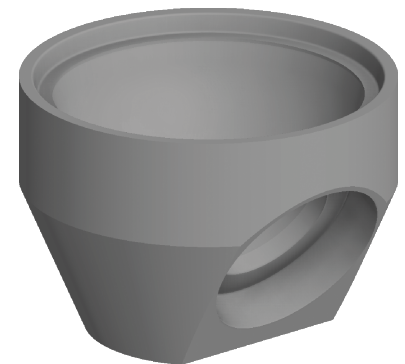


Code	<b>BU41D</b>
Material	<b>Concrete</b>
Weight	<b>79 kg</b>
Norm	<b>DIN1917</b>
Package	<b>12 ks/pal</b>

Street inlet part 1D, bottom part with outlet DN200, union for PVC KG, height 380 mm, according to ČSN EN 1917, concrete strength 40 MPa, chemical resistance XF4  
TBV-Q 450/330/1d

### OTHER:

- Parts for assemblies of street inlets DN450.
- wall thickness 45 mm
- možnost dodání i s přechodkou pro PRAGMA ID



RAINWATER  
DRAINAGE SYSTEM

