

Circular street drain DN450 with outlet

Middle part of street drain DN450

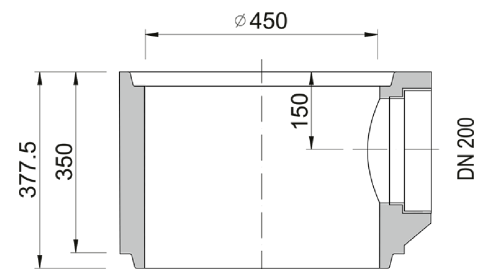
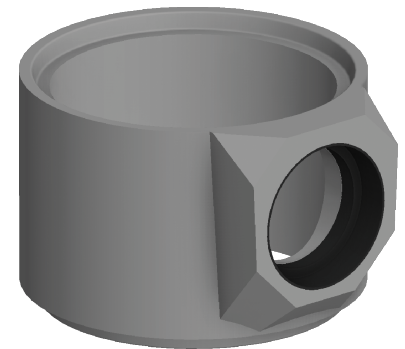


Code	BU3A20P
Material	Concrete
Weight	71 kg
Norm	DIN1917
Package	16 ks/pal

Street inlet part 3D, middle part with outlet DN200, union for PVC KG, height 450 mm, according to EN 1917, concrete strength 40 MPa, chemical resistance XF4
TBV-Q 450/350/3dPVC

OTHER:

| wall thickness 45 mm



RAINWATER
DRAINAGE

