

Square water-gastight manhole cover in a cast iron frame with a foot D400 - heavy traffic load

Standard



Code	WGSK14070-400V
Material	Cast iron
Weight	284 kg
Norm	EN124-2
Package	5 ks/pal
Load class	D400
Traffic load	Heavy traffic load

watertight square cover, without hinge, 1400x700, KASI PUR dampening insert, without spring-secured lid in frame, watertight to 2 bar

COVER:

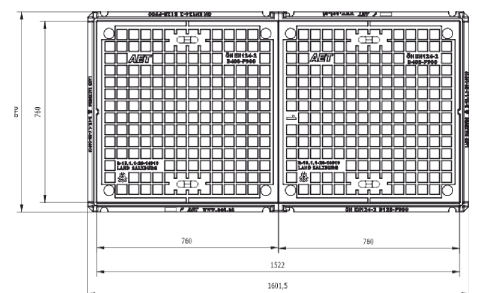
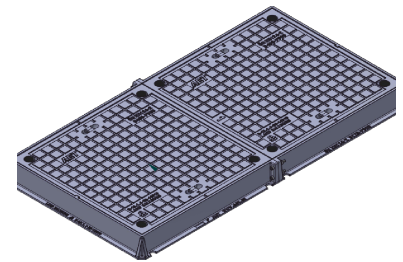
- | Secured screws against opening
- | Cast iron without venting with a quiet design.
- | For water-gastight sets

FRAME:

- | Cast iron frame with foot h.100mm
- | Integrated PUR dampening insert with high resistance

OTHER:

- | The cover is supplied with a black finish
- | Water-gastight cover with certified resistance to 2 bar



**CUSTOMER
SOLUTIONS**



**WATER-GASTIGHT
2BAR.**

