

Šachtový poklop vodo-plynotěsný hranatý v litinovém rámu s patkou

E600 - plochy vystavené vysokému zatížení těžkou technikou

Standard



| | |
|------------|---------------------------|
| Code | KQ99ELV05CS |
| Material | Cast iron |
| Weight | 178 kg |
| Norm | EN124-2 |
| Package | 8 ks/pal |
| Load class | Heavy traffic load |

square cover without hinge, KASI PUR shock-absorbing lining, without spring-loaded lid locking in frame, without spring-secured lid in frame watertight to 2 bar

COVER:

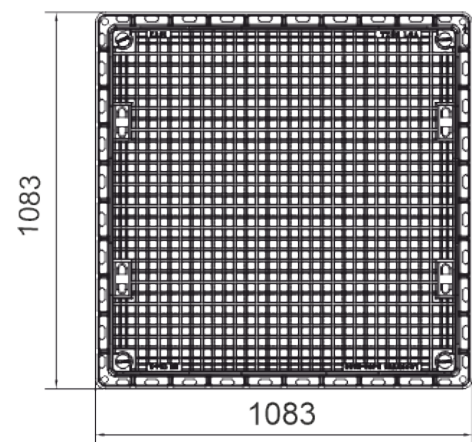
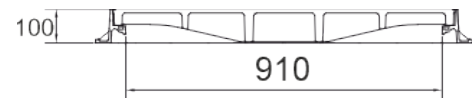
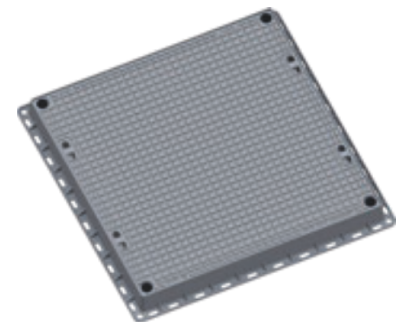
- | Permits your own design/logo
- | For waterproof sets
- | Cast iron without ventilation with quiet design.
- | Zajištěné šrouby proti otevření

FRAME:

- | Cast iron frame with base without trap mounting
- | Integrated PUR damping insert with high resistance

OTHER:

- | Hatch comes with black finish
- | Watertight hatch with certified resistance to 2 bar



CUSTOM
SOLUTIONS



WATER AND GAS-
TIGHT

