

Šachtový poklop vodo-plynotěsný hranatý v roznášecím rámu E600 - plochy vystavené vysokému zatížení těžkou technikou

Standard



Code	KQ99EIV05CS
Material	Cast iron
Weight	315 kg
Norm	EN124-2
Package	3 ks/pal
Load class	Heavy traffic load

square cover without hinge, KASI PUR shock-absorbing lining, without spring-loaded lid locking in frame, without spring-secured lid in frame watertight to 2 bar

COVER:

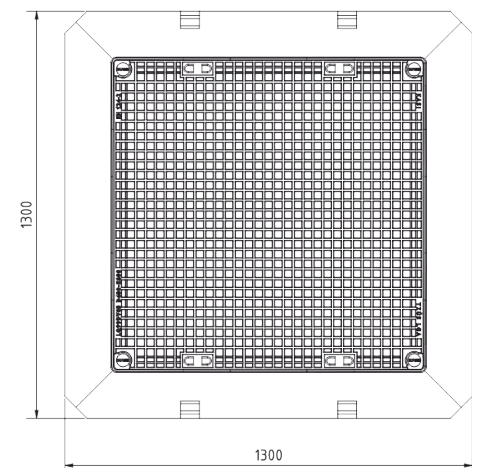
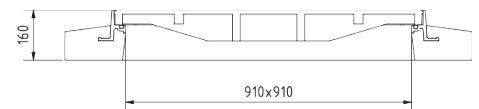
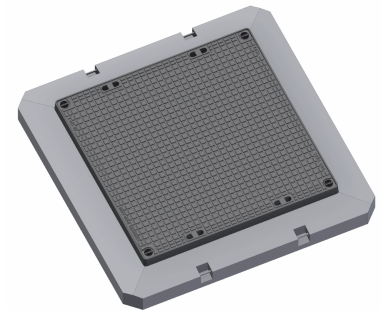
- Permits your own design/logo
- For waterproof sets
- Cast iron without ventilation with quiet design.
- Zajištěné šrouby proti otevření

FRAME:

- Integrated PUR damping insert with high resistance
- Roznášecí rám beton-litina v.160mm, bez osazení pro lapač nečistot

OTHER:

- Hatch comes with black finish
- Watertight hatch with certified resistance to 2 bar



CUSTOM
SOLUTIONS



WATER AND GAS-
TIGHT

