

Šachtový poklop hranatý bez odvětrání v roznášecím rámu E600 - plochy vystavené vysokému zatížení těžkou technikou

Standard



Code	KQ99EI05CS
Material	Cast iron
Weight	315 kg
Norm	EN124-2
Package	3 ks/pal
Load class	Heavy traffic load

square cover without hinge, KASI PUR shock-absorbing lining, without spring-loaded lid locking in frame, without spring-secured lid in frame

COVER:

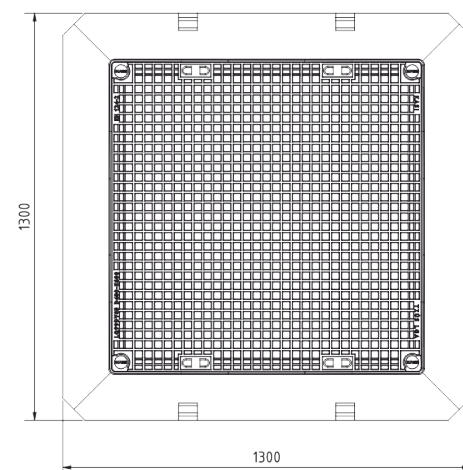
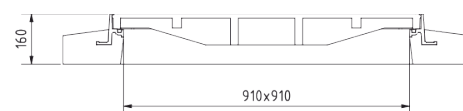
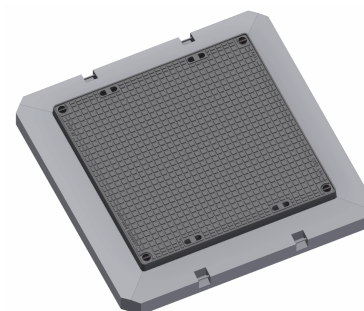
- | Cast iron without ventilation with quiet design.
- | Permits your own design/logo
- | Zajištěné šrouby proti otevření

FRAME:

- | Integrated PUR damping insert with high resistance
- | Roznášecí rám beton-litina v.160mm, bez osazení pro lapač nečistot

OTHER:

- | Hatch comes with black finish



CUSTOM
SOLUTIONS

