

Šachtový poklop vodo-plynotěsný hranatý v litinovém rámu s patkou

E600 - plochy vystavené vysokému zatížení těžkou technikou

Standard



Code	KQ69ELV05CS
Material	Cast iron
Weight	138 kg
Norm	EN124-2
Package	8 ks/pal
Load class	Heavy traffic load

rectangular cover without hinge, KASI PUR shock-absorbing lining, without spring-loaded lid locking in frame, without spring-secured lid in frame, watertight to 2 bar

COVER:

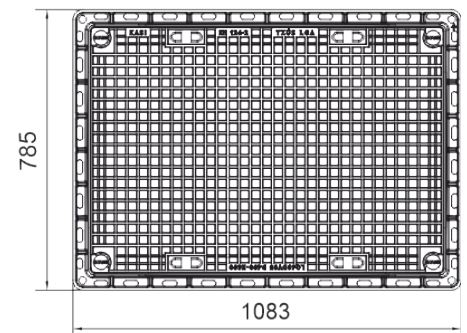
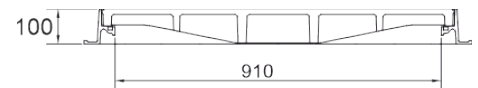
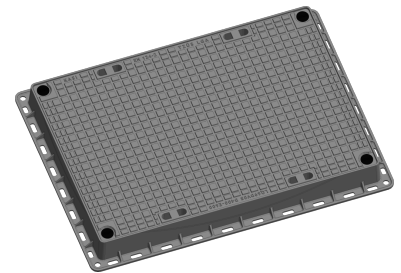
- | Permits your own design/logo
- | For waterproof sets
- | Cast iron without ventilation with quiet design.
- | Zajištěné šrouby proti otevření

FRAME:

- | Cast iron frame with base without trap mounting
- | Integrated PUR damping insert with high resistance

OTHER:

- | Hatch comes with black finish
- | Watertight hatch with certified resistance to 2 bar



CUSTOM
SOLUTIONS



WATER AND GAS-
TIGHT

