

Šachtový poklop hranatý bez odvětrání v litinovém rámu s patkou

E600 - plochy vystavené vysokému zatížení těžkou technikou

Standard



Code	KQ69EL05CS
Material	Cast iron
Weight	138 kg
Norm	EN124-2
Package	8 ks/pal
Load class	Heavy traffic load

rectangular cover without hinge, KASI PUR shock-absorbing lining, without spring-loaded lid locking in frame, with locking

COVER:

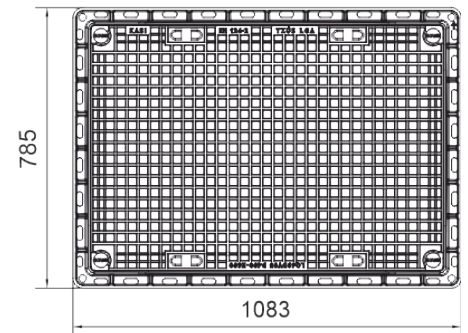
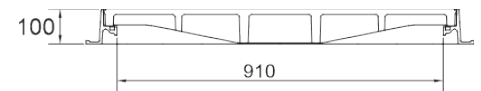
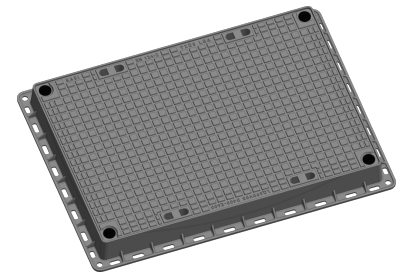
- | Cast iron without ventilation with quiet design.
- | Permits your own design/logo

FRAME:

- | Cast iron frame with base without trap mounting
- | Integrated PUR damping insert with high resistance

OTHER:

- | Hatch comes with black finish



CUSTOM
SOLUTIONS

