

## Šachtový poklop vodo-plynotěsný hranatý v litinovém rámu s patkou

E600 - plochy vystavené vysokému zatížení těžkou technikou

## Standard



Code	<b>KQ66ELV05CS</b>
Material	<b>Cast iron</b>
Weight	<b>104 kg</b>
Norm	<b>EN124-2</b>
Package	<b>10 ks/pal</b>
Load class	<b>Heavy traffic load</b>

watertight square cover, without hinge, KASI PUR dampening insert, without spring-secured lid in frame, watertight to 2 bar

### COVER:

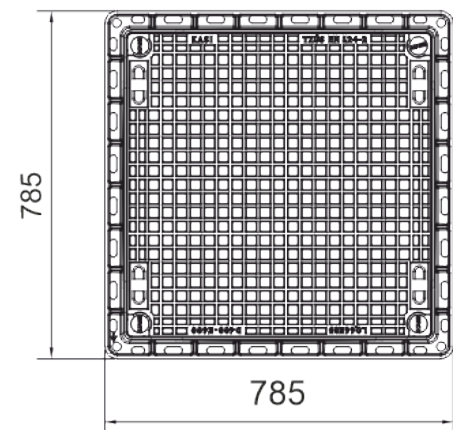
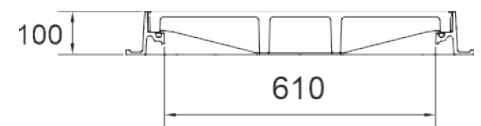
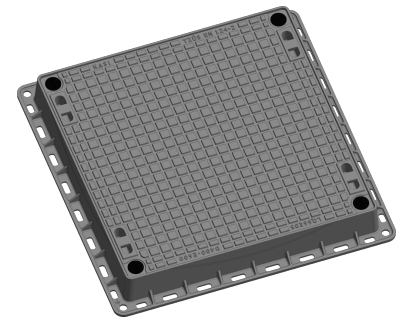
- | Permits your own design/logo
- | For waterproof sets
- | Cast iron without ventilation with quiet design.
- | Zajištěné šrouby proti otevření

### FRAME:

- | Cast iron frame with base without trap mounting
- | Integrated PUR dampening insert with high resistance

### OTHER:

- | Hatch comes with black finish
- | Watertight hatch with certified resistance to 2 bar



CUSTOM  
SOLUTIONS



WATER AND GAS-  
TIGHT

