

## Šachtový poklop vodo-plynotěsný hranatý v roznášecím rámu

E600 - plochy vystavené vysokému zatížení těžkou technikou

# Standard



|            |                           |
|------------|---------------------------|
| Code       | <b>KQ66EIV05CS</b>        |
| Material   | <b>Cast iron</b>          |
| Weight     | <b>244 kg</b>             |
| Norm       | <b>EN124-2</b>            |
| Package    | <b>10 ks/pal</b>          |
| Load class | <b>Heavy traffic load</b> |

watertight square cover, without hinge, KASI PUR dampening insert, without spring-secured lid in frame, watertight to 2 bar

### COVER:

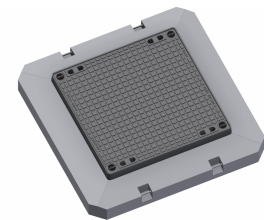
- Permits your own design/logo
- For waterproof sets
- Cast iron without ventilation with quiet design.
- Zajištěné šrouby proti otevření

### FRAME:

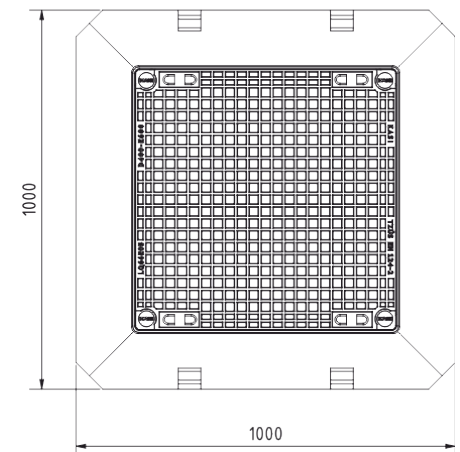
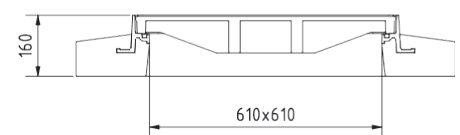
- Integrated PUR damping insert with high resistance
- Roznášecí rám beton-litina v.160mm, bez osazení pro lapač nečistot

### OTHER:

- Hatch comes with black finish
- Watertight hatch with certified resistance to 2 bar



A-A ( 1 : 10 )



CUSTOM  
SOLUTIONS



WATER AND GAS-  
TIGHT

