

## Šachtový poklop hranatý bez odvětrání v roznášecím rámu

E600 - plochy vystavené vysokému zatížení těžkou technikou

## Standard



Code	<b>KQ66EI05CS</b>
Material	<b>Cast iron</b>
Weight	<b>244 kg</b>
Norm	<b>EN124-2</b>
Package	<b>6 ks/pal</b>
Load class	<b>Heavy traffic load</b>

square cover without hinge, KASI PUR shock-absorbing lining, without spring-loaded lid locking in frame

### COVER:

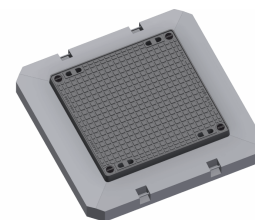
- | Cast iron without ventilation with quiet design.
- | Permits your own design/logo
- | Zajištěné šrouby proti otevření

### FRAME:

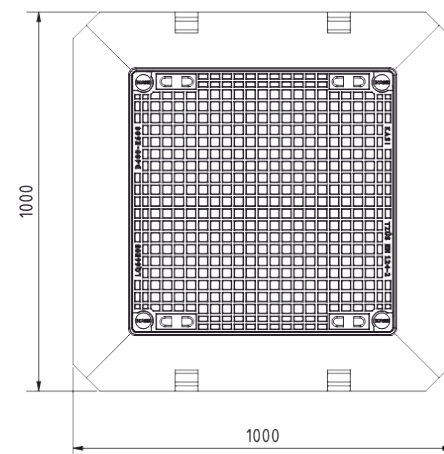
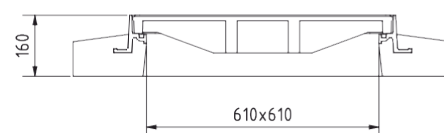
- | Integrated PUR damping insert with high resistance
- | Roznášecí rám beton-litina v.160mm, bez osazení pro lapač nečistot

### OTHER:

- | Hatch comes with black finish



A-A ( 1 : 10 )



CUSTOM  
SOLUTIONS

