

Manhole cover with ventilation in a smooth cast iron frame

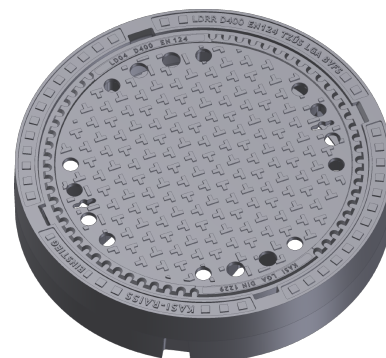
F900 - extremely loaded areas

Standard



Code	KFR24
Material	Cast iron
Weight	140 kg
Norm	DIN1229, EN124-2
Package	8 ks/pal
Load class	Heavy traffic load

cover without hinge, horizontal PUR shock-absorbing lining on frame, EPDM shock-absorbing lining on cover, without spring-loaded lid locking in frame



COVER:

- | Cast iron with ventilation and anti-slip design.
- | Lid weight 90kg
- | Custom theme/logo option
- | EPDM damping insert - resistant to oils

FRAME:

- | Cast iron frame smooth without rim for trap
- | Frame height 160 mm
- | Use with BAR-V and BAR adjustment rings
- | Integrated PUR damping insert with high resistance

OTHER:

- | Suitable for places with high traffic load
- | The cover is supplied with a black finish
- | custom lid motif possible



CUSTOMER
SOLUTIONS



DAMPING INSERT



HATCH WITHOUT
HINGE

