

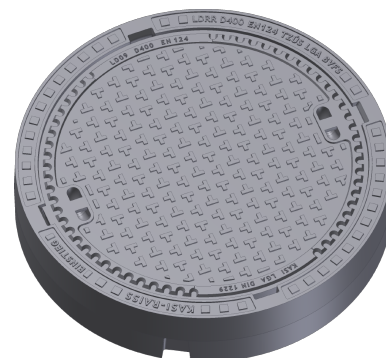
## Manhole cover without ventilation in a smooth cast iron frame

F900 - extremely loaded areas

## Standard



Code	KFR09
Material	Cast iron
Weight	141 kg
Norm	DIN1229, EN124-2
Package	8 ks/pal
Load class	Heavy traffic load



cover without hinge, horizontal PUR shock-absorbing lining, without spring-loaded lid locking in frame

### COVER:

- | Cast iron without venting with anti-slip design.
- | Custom theme/logo option
- | Lid weight 91kg

### FRAME:

- | Cast iron frame smooth without rim for trap
- | Frame height 160 mm
- | Use with BAR-V and BAR adjustment rings
- | Integrated PUR damping insert with high resistance

### OTHER:

- | Suitable for places with high traffic load
- | The cover is supplied with a black finish
- | custom lid motif possible



CUSTOMER  
SOLUTIONS



DAMPING INSERT



HATCH WITHOUT  
HINGE

