

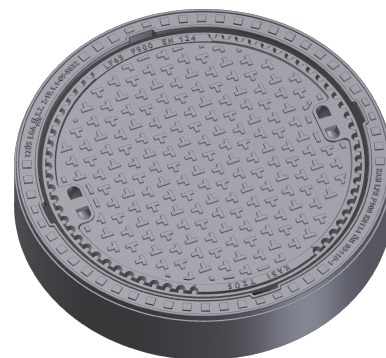
## Manhole cover without ventilation in a cast-iron concrete frame

F900 - extremely loaded areas

## Standard



Code	<b>KFQ65</b>
Material	<b>Concrete, Cast iron</b>
Weight	<b>163 kg</b>
Norm	<b>EN124-2</b>
Package	<b>8 ks/pal</b>
Load class	<b>Heavy traffic load</b>



cover without hinge, horizontal PUR shock-absorbing lining on frame, horizontal and vertical PUR shock-absorbing lining on lid , without spring-loaded lid locking in frame

### COVER:

- | Integrated KASI-PUR damping insert with high resistance
- | Cast iron without venting with anti-slip design.
- | Custom theme/logo option
- | Lid weight 85kg

### FRAME:

- | Frame height 160 mm
- | Use with BAR-V and BAR adjustment rings
- | Integrated PUR damping insert with high resistance

### OTHER:

- | The cover is supplied without surface treatment - painted variants can be ordered
- | Suitable for places with high traffic load
- | custom lid motif possible



CUSTOMER  
SOLUTIONS



DAMPING INSERT

