

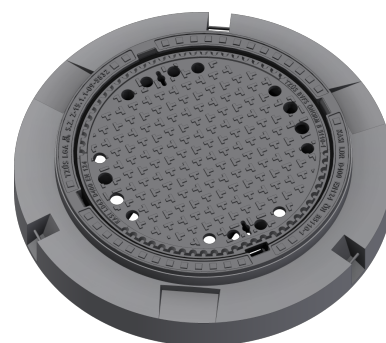
Manhole cover with ventilation in the distribution frame

F900 - extremely loaded areas

Standard



Code	KFI63
Material	Concrete, Cast iron
Weight	246 kg
Norm	EN124-2
Package	6 ks/pal
Load class	Extreme traffic load



cover without hinge, horizontal PUR shock-absorbing lining on frame, horizontal and vertical PUR shock-absorbing lining on lid , without spring-loaded lid locking in frame

COVER:

- | Integrated KASI-PUR damping insert with high resistance
- | Cast iron with ventilation and anti-slip design.
- | Lid weight 82kg
- | Custom theme/logo option

FRAME:

- | Distribution frame 1000mm without mounting for trap
- | Frame height 180 mm
- | Use with BAR-V and BAR adjustment rings
- | Integrated PUR damping insert with high resistance
- | Three handling hinges

OTHER:

- | The cover is supplied without surface treatment - painted variants can be ordered
- | Suitable for places with extreme traffic load
- | custom lid motif possible



CUSTOMER
SOLUTIONS



DAMPING INSERT



HATCH WITHOUT
HINGE

