

Manhole cover with ventilation in the distribution frame

F900 - extremely loaded areas

Standard

Code	KFH63
Material	Concrete, Cast iron
Weight	358 kg
Norm	EN124-2
Package	5 ks/pal
Load class	Heavy traffic load

cover without hinge, horizontal PUR shock-absorbing lining on frame, horizontal and vertical PUR shock-absorbing lining on lid , without spring-loaded lid locking in frame

COVER:

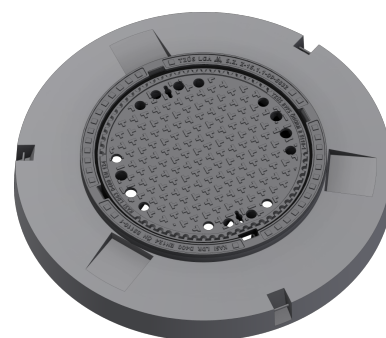
- | Integrated KASI-PUR damping insert with high resistance
- | Cast iron with ventilation and anti-slip design.
- | Lid weight 82kg
- | Custom theme/logo option

FRAME:

- | Distribution frame 1200mm with mounting for catcher
- | Frame height 200 mm
- | Use with BAR-V and BAR adjustment rings
- | Integrated PUR damping insert with high resistance
- | Three handling hinges

OTHER:

- | The cover is supplied without surface treatment - painted variants can be ordered
- | Suitable for places with high traffic load
- | custom lid motif possible



CUSTOMER
SOLUTIONS



DAMPING INSERT



HATCH WITHOUT
HINGE

