

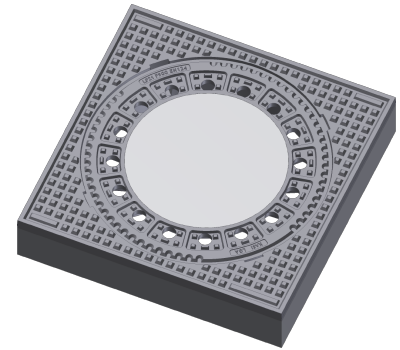
Manhole cover with ventilation in a square frame

F900 - extremely loaded areas

Standard



Code	KFC21
Material	Concrete, Cast iron
Weight	241 kg
Norm	DIN19584-2, DIN1229, EN124-2
Package	5 ks/pal
Load class	Heavy traffic load



cover without hinge, EPDM shock-absorbing lining on cover, without spring-loaded lid locking in frame

COVER:

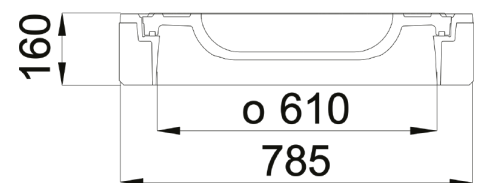
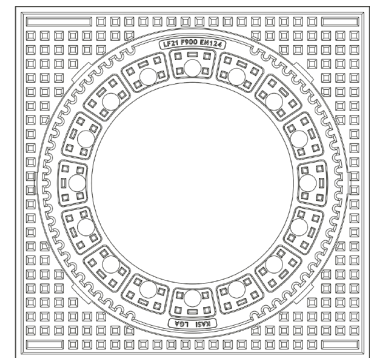
- | With concrete filling with ventilation - uninteresting for thieves
- | Lid weight 91kg
- | EPDM damping insert - resistant to oils

FRAME:

- | Frame height 160 mm
- | Use with BAR-V and BAR adjustment rings

OTHER:

- | Suitable for places with high traffic load
- | chemical resistance of concrete XF4



CONCRETE-CAST
IRON LID



HATCH WITHOUT
HINGE

