

## Manhole cover without ventilation in cast iron frame with foot

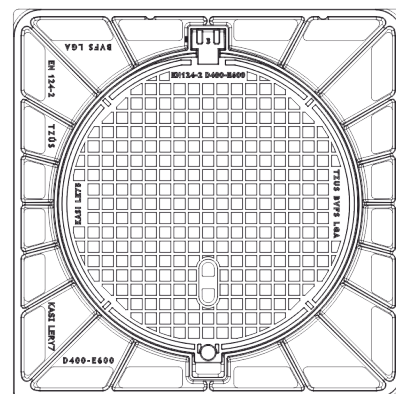
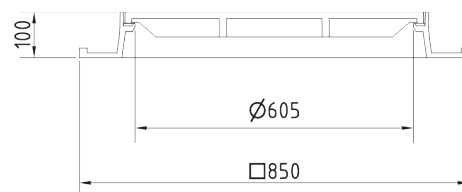
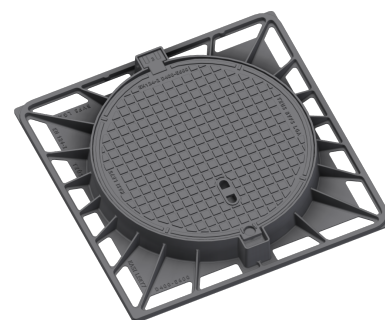
E600 - areas exposed to high loads from heavy machinery

## Europa 7



Code	<b>KEY7S</b>
Material	<b>Cast iron</b>
Weight	<b>82 kg</b>
Norm	<b>EN124-2</b>
Package	<b>10 ks/pal</b>
Load class	<b>Light traffic load</b>

Cover EUROPA 7 with hinge, cast iron lid without ventilation with open hinge, spring-loaded lid locking in the frame, E600, cast iron square foot frame, height 100mm, without a trap, horizontal PUR damping insert on the frame, with shell



### COVER:

- | Cast iron non-vented with quiet design
- | Machined lid seating surface to 0.3mm
- | Hinge with possibility of removal from the frame
- | Safety lock at 90°
- | Custom theme/logo option

### FRAME:

- | Cast iron frame with foot without shoulder for trap
- | Frame height 100 mm
- | Use with BAR-V and BAR adjustment rings
- | Integrated PUR damping insert with high resistance

### OTHER:

- | The cover is supplied without surface treatment - painted variants can be ordered
- | Option of screw locking
- | Suitable for places with light traffic load
- | added lid opening - pocket for crowbar
- | Lid safety lock at 90°



CUSTOMER  
SOLUTIONS



DAMPING INSERT



MAX. OPENING  
ANGLE



QUIET DESIGN