

Manhole cover with ventilation in a cast iron frame with foot

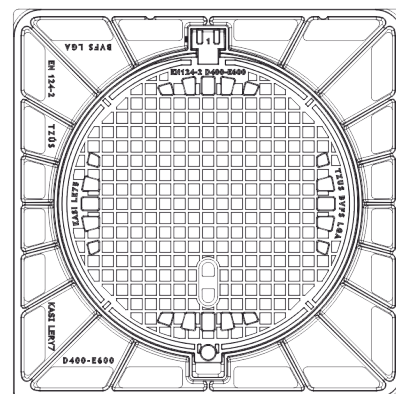
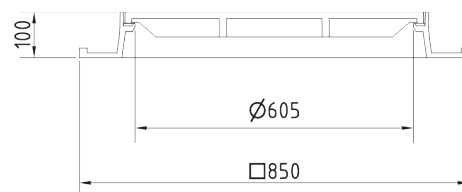
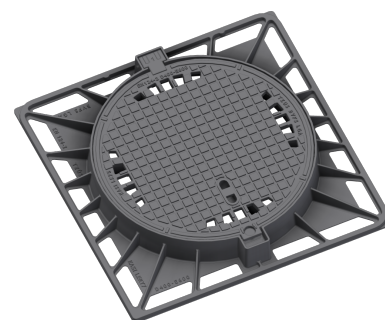
E600 - areas exposed to high loads from heavy machinery

Europa 7



Code	KEY7R
Material	Cast iron
Weight	82 kg
Norm	EN124-2
Package	10 ks/pal
Load class	Light traffic load

Cover EUROPA 7 with hinge, cast iron lid with ventilation with closed hinge, spring-loaded lid lock, E600, cast iron square foot frame, height 100mm, without a trap, horizontal PUR damping insert on the frame, with shell



COVER:

- | Cast iron with ventilation with quiet design
- | Machined lid seating surface to 0.3mm
- | Hinge secured against removal from the frame
- | Safety lock at 90°
- | Lid weight 47kg

FRAME:

- | Cast iron frame with foot without shoulder for trap
- | Frame height 100 mm
- | Use with BAR-V and BAR adjustment rings
- | Integrated PUR damping insert with high resistance

OTHER:

- | The cover is supplied without surface treatment - painted variants can be ordered
- | Option of screw locking
- | Suitable for places with light traffic load
- | added lid opening - pocket for crowbar
- | Lid safety lock at 90°



CUSTOMER
SOLUTIONS



DAMPING INSERT



MAX. OPENING
ANGLE



ANTI-THEFT
PROTECTION



QUIET DESIGN