

Manhole cover with ventilation in a cast iron frame with foot E600 - areas exposed to high loads from heavy machinery

Europa 7



Code	KEY78
Material	Cast iron
Weight	82 kg
Norm	EN124-2
Package	10 ks/pal
Load class	E600

Cover EUROPA 7 with hinge, cast iron lid with ventilation with open hinge, spring-loaded lid lock, E600, cast iron square foot frame, height 100mm, without a trap, horizontal PUR damping insert on the frame

COVER:

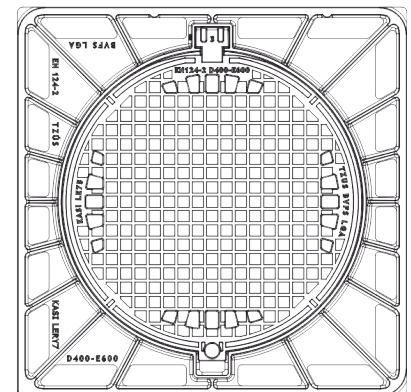
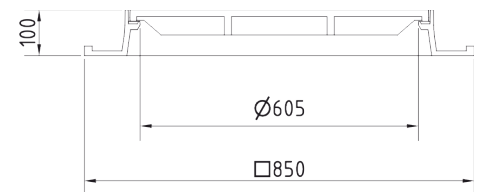
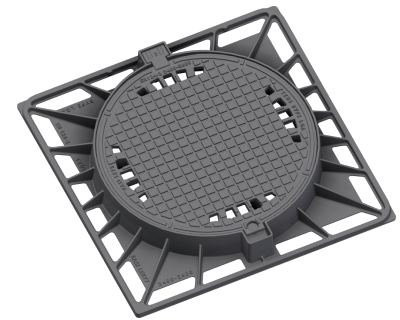
- | Machined lid seating surface to 0.3mm
- | Hinge with possibility of removal from the frame
- | Cast iron with ventilation and quiet design.
- | Safety lock at 90°
- | Lid weight 47kg

FRAME:

- | Cast iron frame with foot without shoulder for trap
- | Frame height 100 mm
- | Use with BAR-V and BAR adjustment rings
- | Integrated PUR damping insert with high resistance

OTHER:

- | The cover is supplied without surface treatment - painted variants can be ordered
- | Option of screw locking
- | Suitable for places with light traffic load
- | Lid safety lock at 90°
- | custom lid motif possible



CUSTOMER SOLUTIONS



DAMPING INSERT



MAX. OPENING ANGLE



QUIET DESIGN