

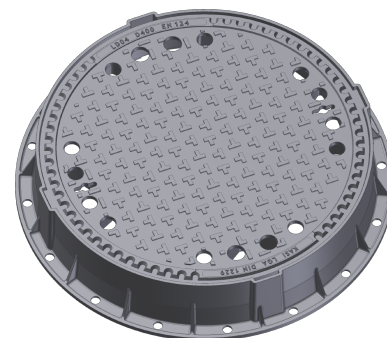
Manhole cover with ventilation in a cast iron frame with foot

E600 - areas exposed to high loads from heavy machinery

Standard



Code	KEP04
Material	Cast iron
Weight	117 kg
Norm	DIN1229, EN124-2
Package	10 ks/pal
Load class	Heavy traffic load



cover without hinge, horizontal PUR shock-absorbing lining, without spring-loaded lid locking in frame

COVER:

- | Cast iron with ventilation and anti-slip design.
- | Lid weight 91kg
- | Custom theme/logo option

FRAME:

- | Frame height 140 mm
- | Use with BAR-V and BAR adjustment rings
- | Integrated PUR damping insert with high resistance

OTHER:

- | The cover is supplied without surface treatment - painted variants can be ordered
- | Suitable for places with high traffic load
- | custom lid motif possible



CUSTOMER
SOLUTIONS



DAMPING INSERT



HATCH WITHOUT
HINGE

