

Watertight manhole cover in cast iron frame E600 - extreme loads



Code	KELV14CS
Material	Cast iron
Weight	83 kg
Norm	EN124-2
Package	10 ks/pal
Load class	Heavy traffic load

without hinge, PUR shock-absorbing lining - tunnel version, without spring-loaded lid locking in frame, watertight to 2 bar

COVER:

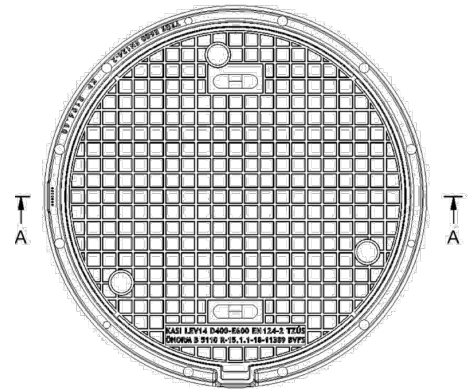
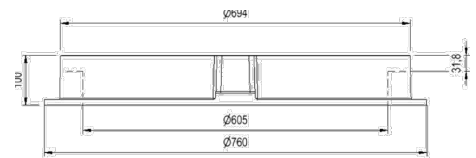
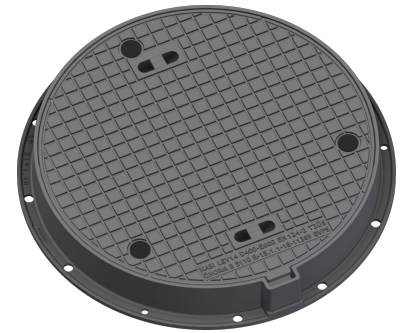
- For waterproof sets
- Lid weight 55 kg

FRAME:

- Frame height 100 mm, weight 28 kg
- Use with BAR-V and BAR adjustment rings
- Integrated PUR damping insert with high resistance
- Suitable for places with high traffic loads
- Cast iron frame with base without trap mounting

OTHER:

- Watertight hatch with certified resistance to 2 bar
- Hatch comes without coating – painted options can be ordered



**WATER AND GAS-
TIGHT**



QUIET DESIGN

