

## Manhole cover without ventilation in cast iron frame with foot

E600 - areas exposed to high loads from heavy machinery

## Europa 9



Code	<b>KEL9I</b>
Material	<b>Cast iron</b>
Weight	<b>67 kg</b>
Norm	<b>EN124-2</b>
Package	<b>16 ks/pal</b>
Load class	<b>Heavy traffic load</b>

Poklop EUROPA 9 s pantem, víko litina bez ventilace s uzavřeným pantem s mušlí, pružinové zajištění víka v rámu, E600, rám litina patkový v.100mm bez osazení pro lapač, horizontální a vertikální PUR tlumící vložka na víku

### COVER:

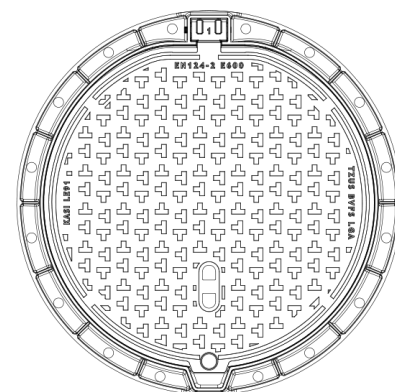
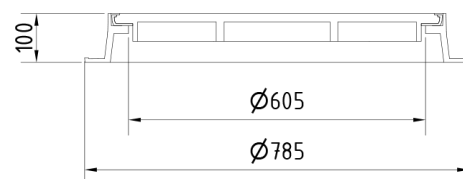
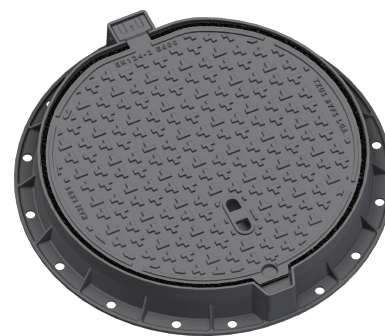
- | Cast iron without ventilation with anti-slip design
- | Integrated KASI-PUR damping insert with high resistance
- | Hinge secured against removal from the frame
- | Safety lock at 90°
- | Custom theme/logo option

### FRAME:

- | Cast iron frame with foot without shoulder for trap
- | Frame height 100 mm
- | Machined frame contact surface to 0.1mm
- | Use with BAR-V and BAR adjustment rings

### OTHER:

- | The cover is supplied without surface treatment - painted variants can be ordered
- | Option of screw locking
- | Suitable for places with high traffic load
- | added lid opening - pocket for crowbar
- | Lid safety lock at 90°



CUSTOMER  
SOLUTIONS



DAMPING INSERT



MAX. OPENING  
ANGLE



ANTI-THEFT  
PROTECTION