

## Manhole cover with ventilation in a cast iron frame with foot E600 - areas exposed to high loads from heavy machinery

# EUROPA 7



Code	<b>KEL76</b>
Material	<b>Cast iron</b>
Weight	<b>67 kg</b>
Norm	<b>EN124-2</b>
Package	<b>16 ks/pal</b>
Load class	<b>E600</b>

Poklop EUROPA 7 s pantem, víko litina s ventilací s uzavřeným pantem tichý design, pružinové zajištění víka v rámu, E600, rám litina patkový v.100mm bez osazení pro lapač, horizontální PUR tlumící vložka na rámu

### COVER:

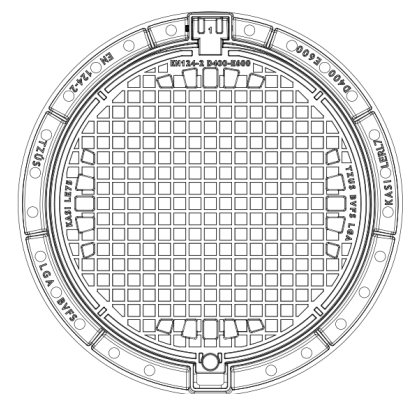
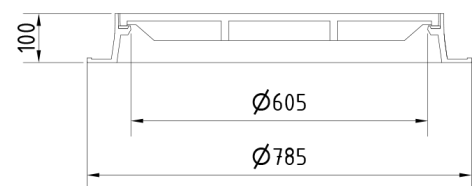
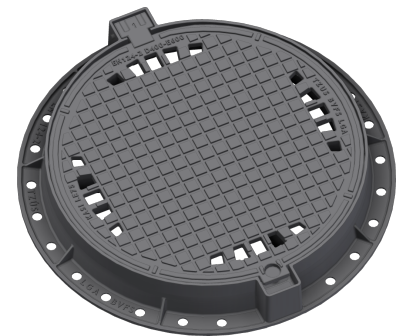
- | Integrated KASI-PUR damping insert with high resistance
- | Machined lid seating surface to 0.3mm
- | Hinge secured against removal from the frame
- | Cast iron with ventilation and quiet design.
- | Safety lock at 90°

### FRAME:

- | Cast iron frame with foot without shoulder for trap
- | Frame height 100 mm
- | Use with BAR-V and BAR adjustment rings
- | Integrated PUR damping insert with high resistance

### OTHER:

- | The cover is supplied without surface treatment - painted variants can be ordered
- | Option of screw locking
- | Suitable for places with high traffic load
- | Lid safety lock at 90°
- | custom lid motif possible



CUSTOMER SOLUTIONS



DAMPING INSERT



MAX. OPENING ANGLE



ANTI-THEFT PROTECTION



QUIET DESIGN