

Manhole cover without ventilation in cast iron frame with foot

E600 - areas exposed to high loads from heavy machinery

Europa 7



Code	KEL75
Material	Cast iron
Weight	67 kg
Norm	EN124-2
Package	16 ks/pal
Load class	E600

Poklop EUROPA 7 s pantem, víko litina bez ventilace s uzavřeným pantem tichý design, pružinové zajištění víka v rámu, E600, rám litina patkový v.100mm bez osazení pro lapač, horizontální PUR tlumící vložka na rámu

COVER:

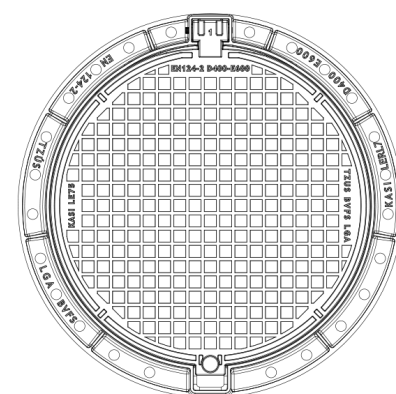
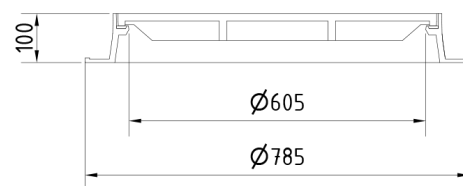
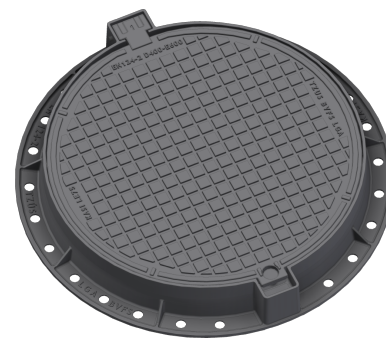
- | Integrated KASI-PUR damping insert with high resistance
- | Machined lid seating surface to 0.3mm
- | Hinge secured against removal from the frame
- | Cast iron without venting with a quiet design.
- | Custom theme/logo option

FRAME:

- | Cast iron frame with foot without shoulder for trap
- | Frame height 100 mm
- | Use with BAR-V and BAR adjustment rings
- | Integrated PUR damping insert with high resistance

OTHER:

- | The cover is supplied without surface treatment - painted variants can be ordered
- | Option of screw locking
- | Suitable for places with high traffic load
- | Lid safety lock at 90°
- | custom lid motif possible



CUSTOMER SOLUTIONS



DAMPING INSERT



MAX. OPENING ANGLE



ANTI-THEFT PROTECTION



QUIET DESIGN