

Manhole cover without ventilation in spreading frame

E600 - extreme loads

EUROPA 9



Code	KEI95
Material	Concrete, Cast iron
Weight	221 kg
Norm	EN124-2
Package	6 ks/pal
Load class	Heavy traffic load

Poklop EUROPA 9 s pantem, víko litina bez ventilace s uzavřeným pantem tichý design, pružinové zajištění víka v rámu, E600, rám beton-litina roznášecí DN1000 v.180mm bez osazení pro lapač, horizontální a vertikální PUR tlumící vložka na víku

COVER:

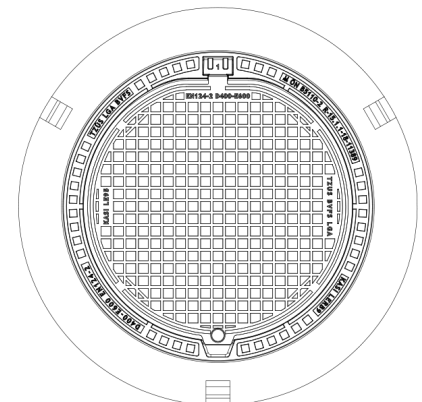
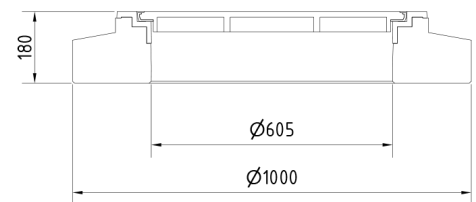
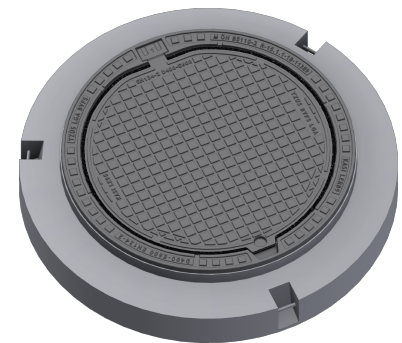
- | Integrated KASI-PUR damping insert with high resistance
- | Hinge secured preventing removal from frame
- | Safety locking at 90°, max. opening 120°
- | Cast iron without ventilation with quiet design.
- | Permits your own design/logo

FRAME:

- | Spreading frame 1000 mm without trap mounting
- | Frame height 180 mm, weight 172 kg
- | Machined bearing surface of the frame to 0.1 mm
- | Use with BAR-V and BAR adjustment rings
- | Three handling hinges

OTHER:

- | Hatch comes without coating – painted options can be ordered
- | Option with screw locking
- | Suitable for places with high traffic loads
- | Safety locking of the lid at 90°, max. opening 120°
- | custom motif on the lid possible



CUSTOM SOLUTIONS



DAMPING INSERT



MAX. OPENING ANGLE



THEFT PROTECTION



QUIET DESIGN