

## Manhole cover with ventilation in spreading frame

E600 - extreme loads

# EUROPA 9



Code	<b>KEG96</b>
Material	<b>Concrete, Cast iron</b>
Weight	<b>338 kg</b>
Norm	<b>EN124-2</b>
Package	<b>5 ks/pal</b>
Load class	<b>Extreme traffic load</b>

Poklop EUROPA 9 s pantem, víko litina s ventilací s uzavřeným pantem tichý design, pružinové zajištění víka v rámu, E600, rám beton-litina roznášecí DN1200 v.200mm bez osazení pro lapač, horizontální a vertikální PUR tlumící vložka na víku

### COVER:

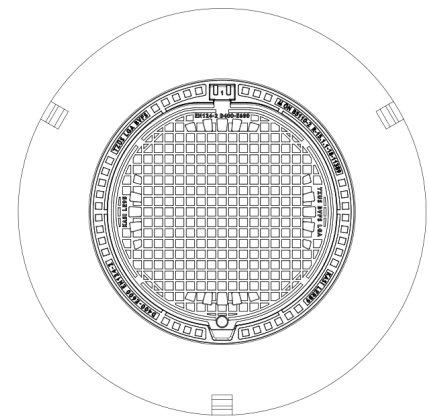
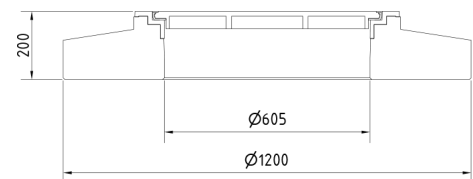
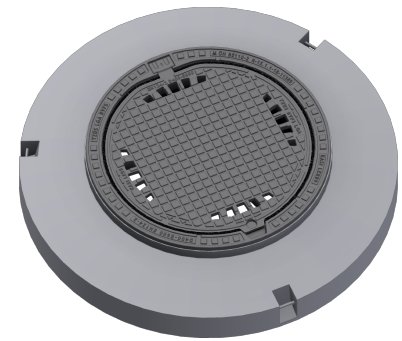
- | Integrated KASI-PUR damping insert with high resistance
- | Cast iron with ventilation with quiet design.
- | Lid weight 49 kg
- | Permits your own design/logo
- | Lid secured in frame with multi-point springs

### FRAME:

- | Spreading frame 1200 mm without trap mounting
- | Frame height 200 mm, weight 289 kg
- | Machined bearing surface of the frame to 0.1 mm
- | Use with BAR-V and BAR adjustment rings
- | Three handling hinges

### OTHER:

- | Hatch comes without coating – painted options can be ordered
- | Option with screw locking
- | Suitable for places with extreme traffic loads
- | Safety locking of the lid at 90°, max. opening 120°
- | custom motif on the lid possible



CUSTOM SOLUTIONS



DAMPING INSERT



MAX. OPENING ANGLE



THEFT PROTECTION



QUIET DESIGN