

Manhole cover without ventilation in the distribution frame

E600 - areas exposed to high loads from heavy machinery

EUROPA 9



Code	KEG95
Material	Concrete, Cast iron
Weight	338 kg
Norm	EN124-2
Package	5 ks/pal
Load class	Extreme traffic load

Poklop EUROPA 9 s pantem, víko litina bez ventilace s uzavřeným pantem tichý design, pružinové zajištění víka v rámu, E600, rám beton-litina roznášecí DN1200 v.200mm bez osazení pro lapač, horizontální a vertikální PUR tlumící vložka na víku

COVER:

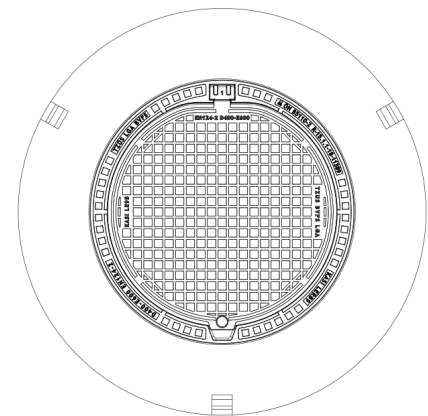
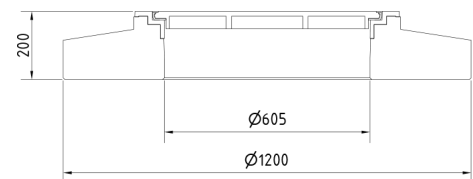
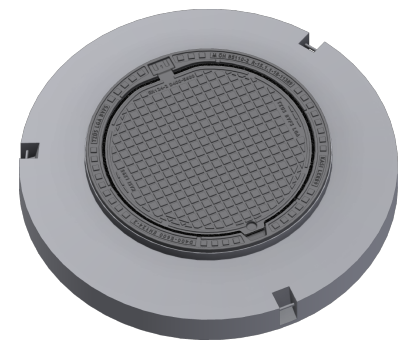
- | Integrated KASI-PUR damping insert with high resistance
- | Hinge secured against removal from the frame
- | Safety lock at 90°
- | Cast iron without venting with a quiet design.
- | Custom theme/logo option

FRAME:

- | Distribution frame 1200mm without mounting for catcher
- | Frame height 200 mm
- | Machined frame contact surface to 0.1mm
- | Use with BAR-V and BAR adjustment rings
- | Three handling hinges

OTHER:

- | The cover is supplied without surface treatment - painted variants can be ordered
- | Option of screw locking
- | Suitable for places with extreme traffic load
- | Lid safety lock at 90°



CUSTOMER SOLUTIONS



DAMPING INSERT



MAX. OPENING ANGLE



ANTI-THEFT PROTECTION



QUIET DESIGN