

Manhole cover without ventilation in spreading frame

E600 - extreme loads

EUROPA 9



Code	KEG93
Material	Concrete, Cast iron
Weight	336 kg
Norm	EN124-2
Package	5 ks/pal
Load class	Extreme traffic load

Poklop EUROPA 9 s pantem, víko litina bez ventilace s otevřeným pantem, pružinové zajištění víka v rámu, E600, rám beton-litina roznášecí DN1200 v.200mm bez osazení pro lapač, horizontální a vertikální PUR tlumící vložka na víku

COVER:

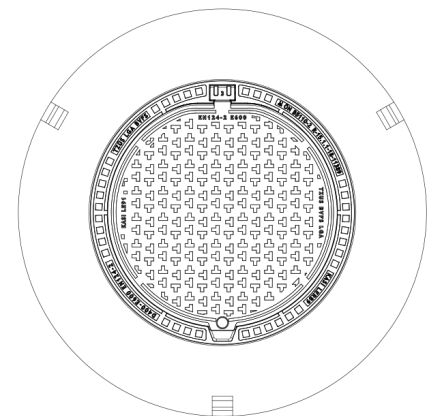
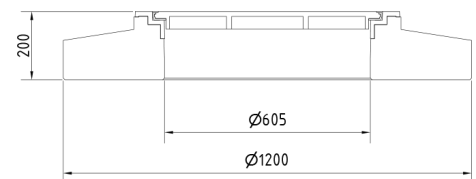
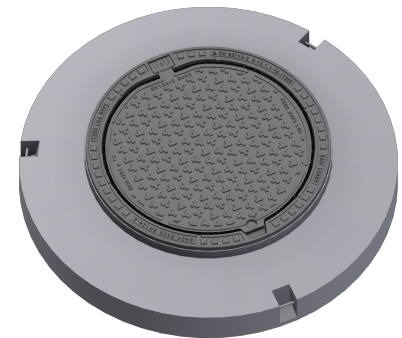
- | Cast iron with ventilation with anti-slip design.
- | Lid weight 47 kg
- | Lid secured in frame with multi-point springs
- | Integrated KASI-PUR damping insert with high resistance
- | Safety locking at 90°, max. opening 120°

FRAME:

- | Frame height 200 mm, weight 289 kg
- | Use with BAR-V and BAR adjustment rings
- | Three handling hinges
- | Suitable for replacing hatches in areas with slightly damaged cones.
- | Suitable for places with extreme traffic loads

OTHER:

- | Option with screw locking
- | custom motif on the lid possible
- | Hatch comes without coating – painted options can be ordered



CUSTOM SOLUTIONS



DAMPING INSERT



MAX. OPENING ANGLE

