

## Manhole cover without ventilation in spreading frame

E600 - extreme loads

### EUROPA 9



Code	<b>KEG91</b>
Material	<b>Concrete, Cast iron</b>
Weight	<b>336 kg</b>
Norm	<b>EN124-2</b>
Package	<b>5 ks/pal</b>
Load class	<b>Extreme traffic load</b>

Poklop EUROPA 9 s pantem, víko litina bez ventilace s uzavřeným pantem, pružinové zajištění víka v rámu, E600, rám beton-litina roznášecí DN1200 v.200mm bez osazení pro lapač, horizontální a vertikální PUR tlumící vložka na víku

#### COVER:

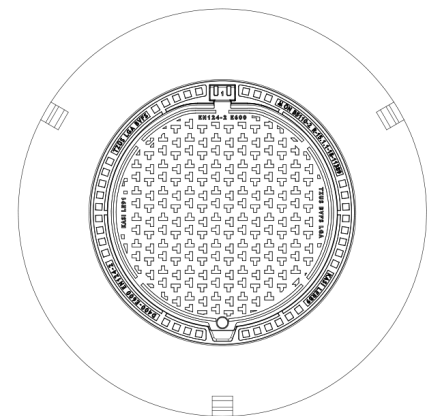
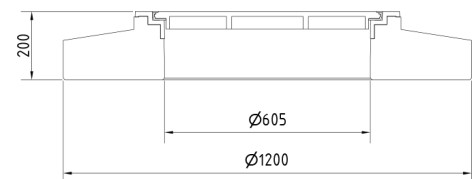
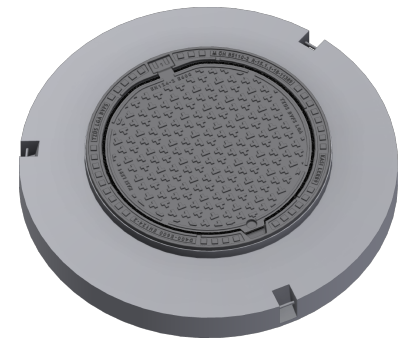
- | Integrated KASI-PUR damping insert with high resistance
- | Cast iron with ventilation with anti-slip design.
- | Permits your own design/logo
- | Lid weight 47 kg
- | Lid secured in frame with multi-point springs

#### FRAME:

- | Spreading frame 1200 mm without trap mounting
- | Frame height 200 mm, weight 289 kg
- | Use with BAR-V and BAR adjustment rings
- | Three handling hinges
- | Suitable for replacing hatches in areas with slightly damaged cones.

#### OTHER:

- | Hatch comes without coating – painted options can be ordered
- | Option with screw locking
- | Safety locking of the lid at 90°, max. opening 120°
- | custom motif on the lid possible



CUSTOM SOLUTIONS



DAMPING INSERT



MAX. OPENING ANGLE



THEFT PROTECTION

