

## Manhole cover with ventilation in a cast-iron concrete frame

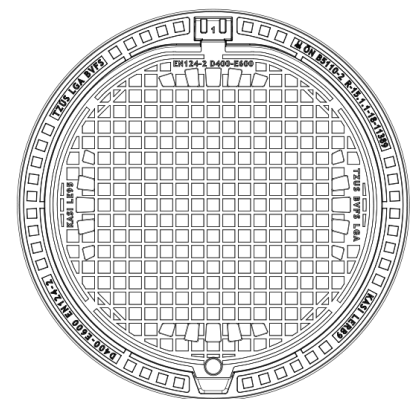
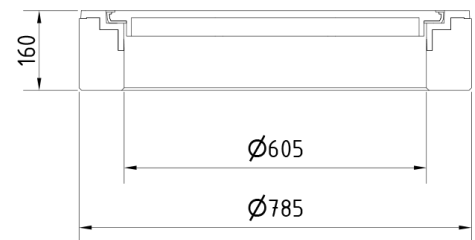
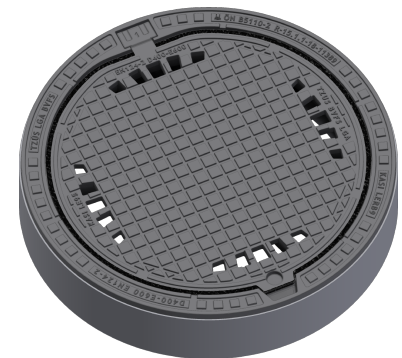
E600 - areas exposed to high loads from heavy machinery

### EUROPA 9



Code	<b>KEB96</b>
Material	<b>Concrete, Cast iron</b>
Weight	<b>128 kg</b>
Norm	<b>EN124-2</b>
Package	<b>10 ks/pal</b>
Load class	<b>Extreme traffic load</b>

Poklop EUROPA 9 s pantem, víko litina s ventilací s uzavřeným pantem tichý design, pružinové zajištění víka v rámu, E600, rám beton-litina v.160mm bez osazení pro lapač, horizontální a vertikální PUR tlumící vložka na víku



#### COVER:

- | Integrated KASI-PUR damping insert with high resistance
- | Hinge secured against removal from the frame
- | Safety lock at 90°
- | Cast iron with ventilation and quiet design.
- | Lid weight 49kg

#### FRAME:

- | Cast-concrete frame without mounting for the trap
- | Frame height 160 mm
- | Machined frame contact surface to 0.1mm
- | Use with BAR-V and BAR adjustment rings

#### OTHER:

- | The cover is supplied without surface treatment - painted variants can be ordered
- | Option of screw locking
- | Suitable for places with extreme traffic load
- | Lid safety lock at 90°
- | custom lid motif possible



CUSTOMER SOLUTIONS



DAMPING INSERT



MAX. OPENING ANGLE



ANTI-THEFT PROTECTION



QUIET DESIGN