

Inlet grille in square cast iron frame

D400 - heavy traffic load

Europa 9



| | |
|------------|---------------------------|
| Code | KDY9N |
| Material | Cast iron |
| Weight | 75 kg |
| Norm | EN124-2 |
| Package | 10 ks/pal |
| Load class | Heavy traffic load |

Cover EUROPA 9 with hinge, cast iron lid circular inlet grille with open hinge, spring-loaded lid lock in frame, D400, cast iron square foot frame, height 100mm, without mounting for trap, horizontal and vertical PUR damping insert on lid

COVER:

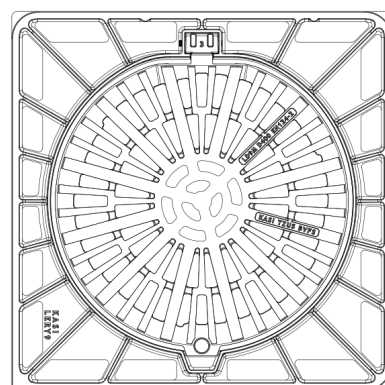
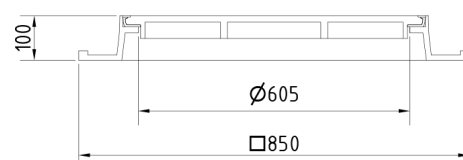
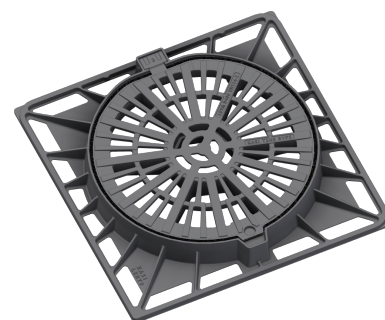
- | Integrated KASI-PUR damping insert with high resistance
- | Hinge with possibility of removal from the frame
- | Safety lock at 90°
- | Lid weight 37kg
- | Securing the lid in the frame with multi-point springs

FRAME:

- | Cast iron frame with foot without shoulder for trap
- | Frame height 100 mm
- | Machined frame contact surface to 0.1mm
- | Use with BAR-V and BAR adjustment rings

OTHER:

- | The cover is supplied without surface treatment - painted variants can be ordered
- | Option of screw locking
- | Suitable for places with high traffic load
- | Lid safety lock at 90°



DAMPING INSERT



MAX. OPENING
ANGLE



RAINWATER
DRAINAGE