

## Manhole cover without ventilation in a square cast iron frame

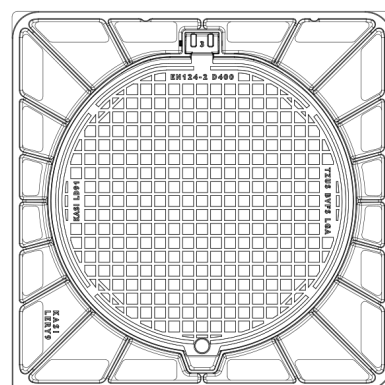
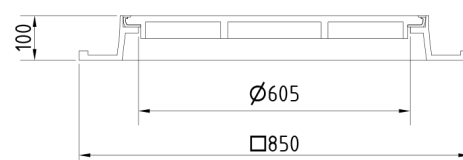
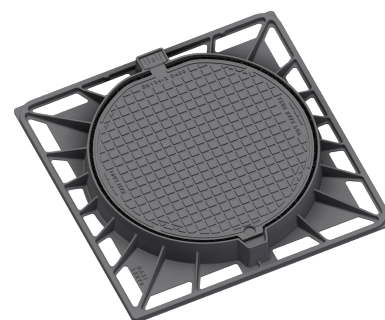
D400 - heavy traffic load

# Europa 9



Code	<b>KDY97</b>
Material	<b>Cast iron</b>
Weight	<b>77 kg</b>
Norm	<b>EN124-2</b>
Package	<b>10 ks/pal</b>
Load class	<b>Heavy traffic load</b>

Cover EUROPA 9 with hinge, cast iron lid without ventilation with open hinge, quiet design, spring-loaded lid lock in the frame, D400, cast iron frame, square, h. 100mm, without mounting for trap, horizontal and vertical PUR damping insert on the lid



### COVER:

- | Integrated KASI-PUR damping insert with high resistance
- | Hinge with possibility of removal from the frame
- | Safety lock at 90°
- | Cast iron without venting with a quiet design.
- | Custom theme/logo option

### FRAME:

- | Cast iron frame with foot without shoulder for trap
- | Frame height 100 mm
- | Machined frame contact surface to 0.1mm
- | Use with BAR-V and BAR adjustment rings

### OTHER:

- | The cover is supplied without surface treatment - painted variants can be ordered
- | Option of screw locking
- | Suitable for places with high traffic load
- | Lid safety lock at 90°
- | custom lid motif possible



**CUSTOMER  
SOLUTIONS**



**DAMPING INSERT**



**MAX. OPENING  
ANGLE**



**QUIET DESIGN**