

Manhole cover without ventilation in a square cast iron frame

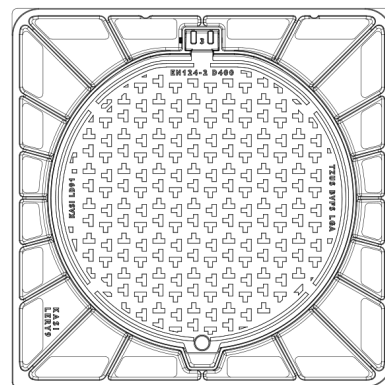
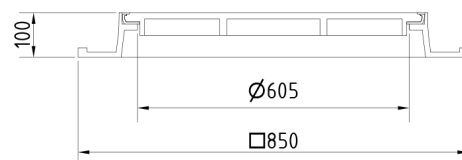
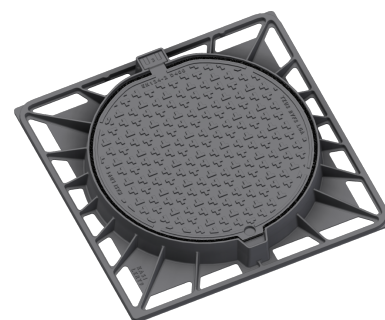
D400 - heavy traffic load

Europa 9



Code	KDY93
Material	Cast iron
Weight	75 kg
Norm	EN124-2
Package	10 ks/pal
Load class	Heavy traffic load

Cover EUROPA 9 with hinge, cast iron lid without ventilation with open hinge, spring-loaded lid lock in frame, D400, cast iron square foot frame, height 100mm, without mounting for trap, horizontal and vertical PUR damping insert on lid



COVER:

- | Integrated KASI-PUR damping insert with high resistance
- | Cast iron without venting with anti-slip design.
- | Hinge with possibility of removal from the frame
- | Safety lock at 90°
- | Custom theme/logo option

FRAME:

- | Cast iron frame with foot without shoulder for trap
- | Frame height 100 mm
- | Machined frame contact surface to 0.1mm
- | Use with BAR-V and BAR adjustment rings

OTHER:

- | The cover is supplied without surface treatment - painted variants can be ordered
- | Option of screw locking
- | Suitable for places with high traffic load
- | Lid safety lock at 90°
- | custom lid motif possible



CUSTOMER
SOLUTIONS



DAMPING INSERT



MAX. OPENING
ANGLE