

Manhole cover without ventilation in cast iron frame with foot

D400 - light traffic load

Europa 7



| | |
|------------|---------------------------|
| Code | KDY7K |
| Material | Cast iron |
| Weight | 65 kg |
| Norm | EN124-2 |
| Package | 10 ks/pal |
| Load class | Light traffic load |

Cover EUROPA 7 with hinge, cast iron lid without ventilation with open hinge, spring-loaded lid locking in frame, D400, cast iron square foot frame, h.100mm, without mounting for trap, horizontal PUR damping insert on the frame, with shell

COVER:

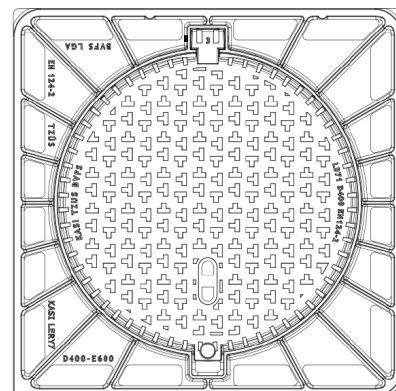
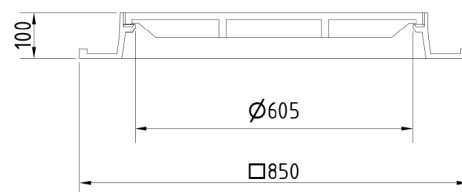
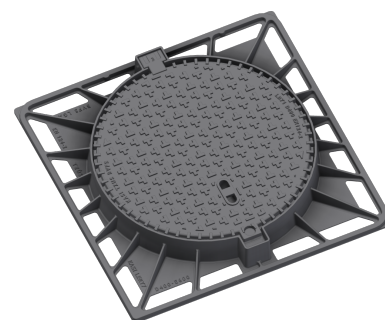
- Cast iron without ventilation with anti-slip design
- Machined lid seating surface to 0.3mm
- Hinge with possibility of removal from the frame
- Safety lock at 90°
- Custom theme/logo option

FRAME:

- Cast iron frame with foot without shoulder for trap
- Frame height 100 mm
- Use with BAR-V and BAR adjustment rings
- Integrated PUR damping insert with high resistance

OTHER:

- The cover is supplied without surface treatment - painted variants can be ordered
- Option of screw locking
- Suitable for places with light traffic load
- added lid opening - pocket for crowbar



CUSTOMER
SOLUTIONS



DAMPING INSERT



MAX. OPENING
ANGLE