

Manhole cover with ventilation in a cast iron frame with foot D400 - light traffic load

Europa 7



Code	KDY7J
Material	Cast iron
Weight	64 kg
Norm	EN124-2
Package	10 ks/pal
Load class	Light traffic load

Cover EUROPA 7 with hinge, cast iron lid with ventilation with closed hinge, spring-loaded lid lock, D400, cast iron square foot frame, height 100mm, without a trap, horizontal PUR damping insert on the frame, with a shell

COVER:

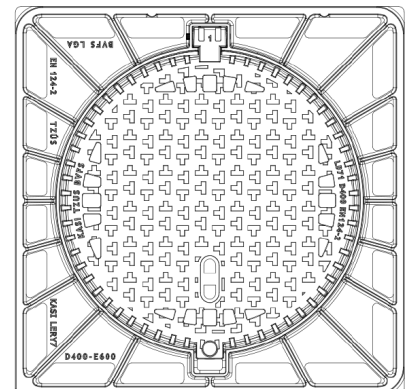
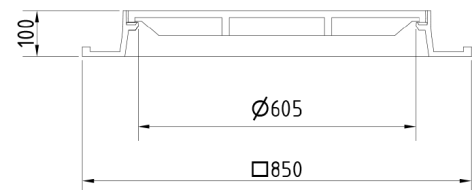
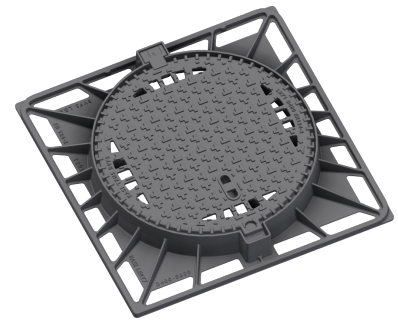
- | Cast iron non-vented with anti-slip design
- | Machined lid seating surface to 0.3mm
- | Hinge secured against removal from the frame
- | Safety lock at 90°
- | Lid weight 29kg

FRAME:

- | Cast iron frame with foot without shoulder for trap
- | Frame height 100 mm
- | Use with BAR-V and BAR adjustment rings
- | Integrated PUR damping insert with high resistance

OTHER:

- | The cover is supplied without surface treatment - painted variants can be ordered
- | Option of screw locking
- | Suitable for places with light traffic load
- | added lid opening - pocket for crowbar
- | Lid safety lock at 90°



**CUSTOMER
SOLUTIONS**



DAMPING INSERT



**MAX. OPENING
ANGLE**



**ANTI-THEFT
PROTECTION**