

Manhole cover without ventilation in cast iron frame with foot

D400 - light traffic load

Europa 7



Code	KDY73
Material	Cast iron
Weight	65 kg
Norm	EN124-2
Package	10 ks/pal
Load class	Light traffic load

Cover EUROPA 7 with hinge, cast iron lid without ventilation with open hinge, spring-loaded lid lock, D400, cast iron square foot frame, height 100mm, without a trap, horizontal PUR damping insert on the frame

COVER:

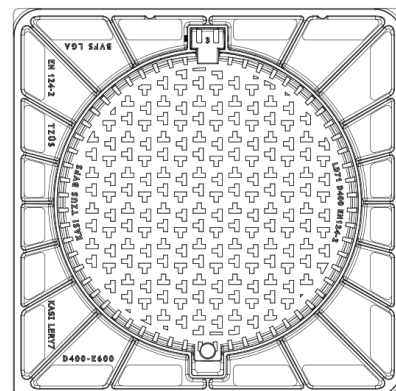
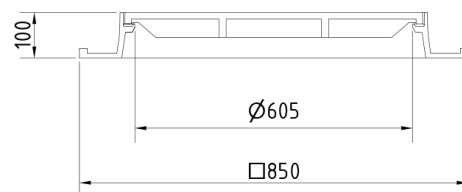
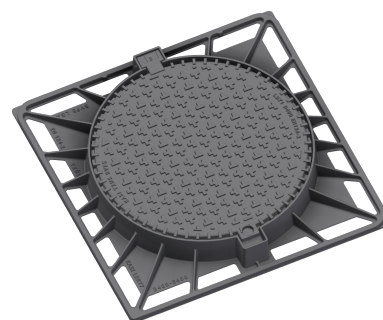
- Machined lid seating surface to 0.3mm
- Cast iron without venting with anti-slip design.
- Hinge with possibility of removal from the frame
- Safety lock at 90°
- Custom theme/logo option

FRAME:

- Cast iron frame with foot without shoulder for trap
- Frame height 100 mm
- Use with BAR-V and BAR adjustment rings
- Integrated PUR damping insert with high resistance

OTHER:

- The cover is supplied without surface treatment - painted variants can be ordered
- Option of screw locking
- Suitable for places with light traffic load
- Lid safety lock at 90°
- custom lid motif possible



**CUSTOMER
SOLUTIONS**



DAMPING INSERT



**MAX. OPENING
ANGLE**