

Manhole cover without ventilation in cast iron-concrete frame

D400 - extreme traffic loads

Standard



Code	KDQ65
Material	Concrete, Cast iron
Weight	162 kg
Norm	EN124-2
Package	8 ks/pal
Load class	Extreme traffic load

cover without hinge, horizontal PUR shock-absorbing lining on frame, horizontal and vertical PUR shock-absorbing lining on lid, without spring-loaded lid locking in frame

COVER:

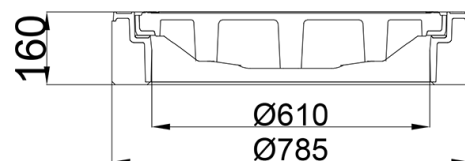
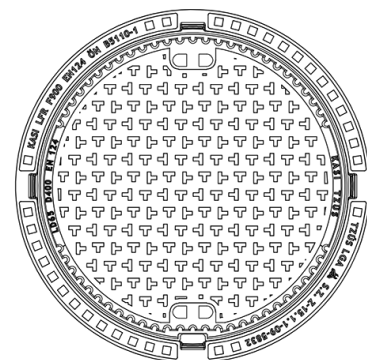
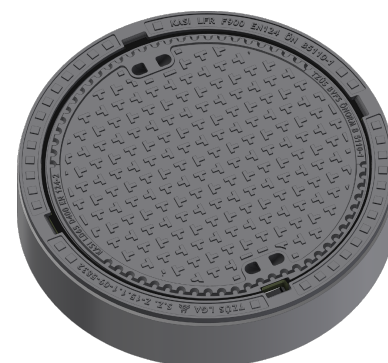
- | Integrated KASI-PUR damping insert with high resistance
- | Cast iron with ventilation with anti-slip design.
- | Permits your own design/logo
- | Lid weight 83 kg

FRAME:

- | Frame height 160 mm, weight 79 kg
- | Use with BAR-V and BAR adjustment rings
- | Integrated PUR damping insert with high resistance

OTHER:

- | Hatch comes without coating – painted options can be ordered
- | Suitable for places with extreme traffic loads
- | custom motif on the lid possible



CUSTOM SOLUTIONS



DAMPING INSERT



HATCH WITHOUT HINGE

