

Manhole cover without ventilation in cast iron frame with foot

D400 - light traffic load

Europa 7



Code	KDL7I
Material	Cast iron
Weight	50 kg
Norm	EN124-2
Package	20 ks/pal
Load class	Light traffic load

EUROPA 7 cover with hinge, cast iron lid without ventilation with closed hinge, spring-loaded lid lock in the frame, D400, cast iron foot frame h. 100mm without mounting for trap, horizontal and vertical PUR damping insert on the frame, with shell

COVER:

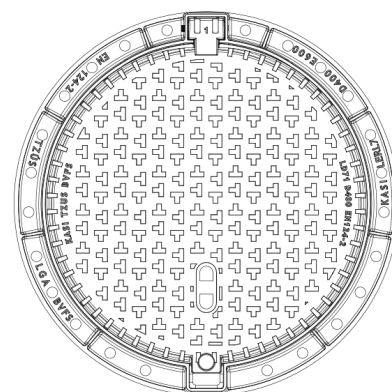
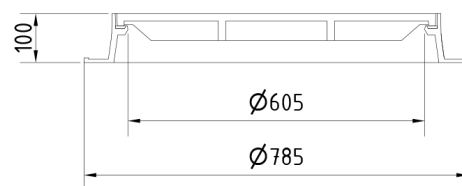
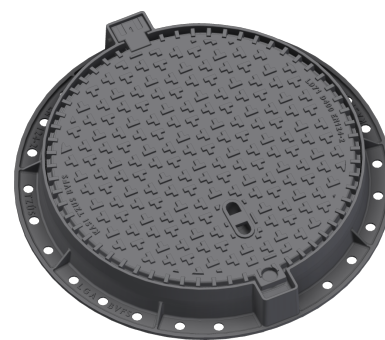
- | Cast iron without ventilation with anti-slip design
- | Machined lid seating surface to 0.3mm
- | Hinge secured against removal from the frame
- | Safety lock at 90°
- | Custom theme/logo option

FRAME:

- | Cast iron frame with foot without shoulder for trap
- | Frame height 100 mm
- | Use with BAR-V and BAR adjustment rings
- | Integrated PUR damping insert with high resistance

OTHER:

- | The cover is supplied without surface treatment - painted variants can be ordered
- | Option of screw locking
- | Suitable for places with light traffic load
- | added lid opening - pocket for crowbar
- | Lid safety lock at 90°



**CUSTOMER
SOLUTIONS**



DAMPING INSERT



**MAX. OPENING
ANGLE**



**ANTI-THEFT
PROTECTION**