

## Manhole cover with ventilation in a cast iron frame with foot

D400 - light traffic load

## Europa 7



Code	<b>KDL72</b>
Material	<b>Cast iron</b>
Weight	<b>49 kg</b>
Norm	<b>EN124-2</b>
Package	<b>20 ks/pal</b>
Load class	<b>Light traffic load</b>

EUROPA cover with hinge, cast iron lid with ventilation with closed hinge, spring-loaded lid lock in the frame, D400, cast iron foot frame h.100mm without mounting for trap, horizontal PUR damping insert on the frame

### COVER:

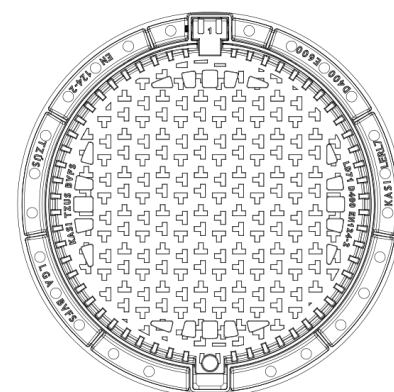
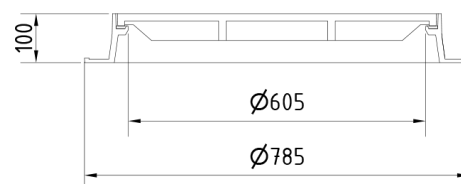
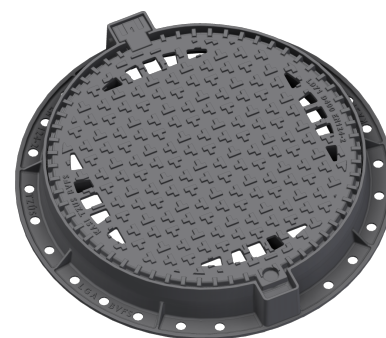
- Machined lid seating surface to 0.3mm
- Cast iron with ventilation and anti-slip design.
- Hinge secured against removal from the frame
- Safety lock at 90°
- Lid weight 29kg

### FRAME:

- Cast iron frame with foot without shoulder for trap
- Frame height 100 mm
- Use with BAR-V and BAR adjustment rings
- Integrated PUR damping insert with high resistance

### OTHER:

- The cover is supplied without surface treatment - painted variants can be ordered
- Option of screw locking
- Suitable for places with light traffic load
- Lid safety lock at 90°
- custom lid motif possible



CUSTOMER  
SOLUTIONS



DAMPING INSERT



MAX. OPENING  
ANGLE



ANTI-THEFT  
PROTECTION