

Manhole cover without ventilation in cast iron frame with foot

D400 - light traffic load

Standard



Code	KDL69
Material	Cast iron
Weight	112 kg
Norm	DIN1229, EN124-2
Package	10 ks/pal
Load class	Light traffic load

cover without hinge, horizontal PUR shock-absorbing lining on frame, horizontal and vertical PUR shock-absorbing lining on lid, without spring-loaded lid locking in frame

COVER:

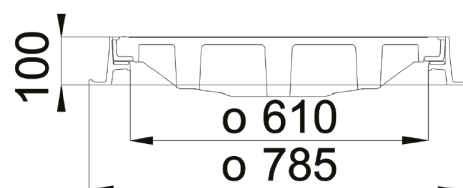
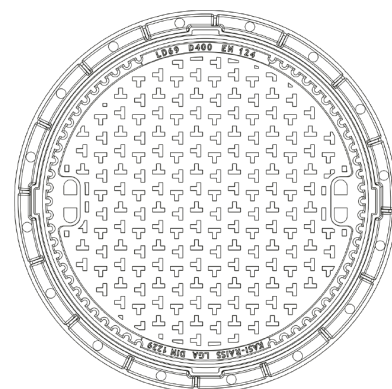
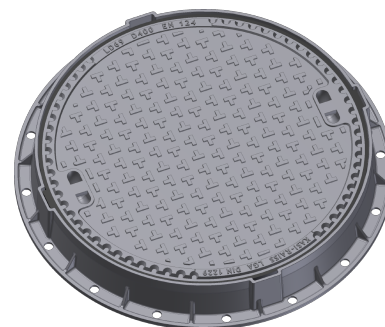
- | Integrated KASI-PUR damping insert with high resistance
- | Cast iron without venting with anti-slip design.
- | Custom theme/logo option
- | Lid weight 90kg

FRAME:

- | Cast iron frame with foot without shoulder for trap
- | Frame height 100 mm
- | Use with BAR-V and BAR adjustment rings
- | Integrated PUR damping insert with high resistance

OTHER:

- | The cover is supplied without surface treatment - painted variants can be ordered
- | Suitable for places with light traffic load
- | custom lid motif possible



CUSTOMER
SOLUTIONS



DAMPING INSERT



HATCH WITHOUT
HINGE

