

## Manhole cover with ventilation in a cast iron frame with foot D400 - light traffic load

### Standard



Code	KDK24
Material	Cast iron
Weight	113 kg
Norm	DIN1229, EN124-2
Package	10 ks/pal
Load class	Light traffic load

cover without hinge, horizontal PUR shock-absorbing lining on frame, EPDM shock-absorbing lining on cover, without spring-loaded lid locking in frame

#### COVER:

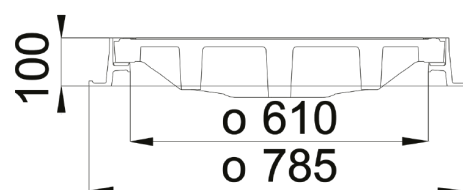
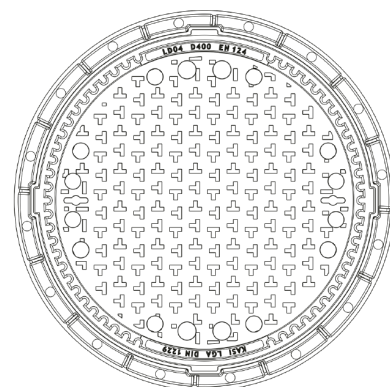
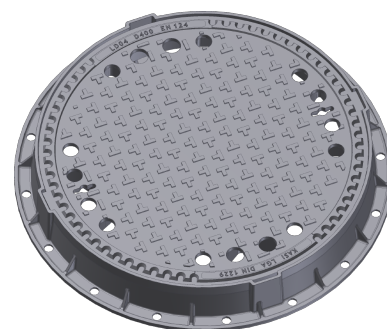
- | Cast iron with ventilation and anti-slip design.
- | Lid weight 90kg
- | Custom theme/logo option
- | EPDM damping insert - resistant to oils

#### FRAME:

- | Cast iron frame with foot with catcher attachment
- | Frame height 100 mm
- | Use with BAR-V and BAR adjustment rings
- | Integrated PUR damping insert with high resistance

#### OTHER:

- | The cover is supplied without surface treatment - painted variants can be ordered
- | Suitable for places with light traffic load
- | custom lid motif possible



CUSTOMER  
SOLUTIONS



DAMPING INSERT



HATCH WITHOUT  
HINGE

