

Manhole cover without ventilation in the distribution frame

D400 - heavy traffic load

Standard

Code	KDJ25
Material	Concrete, Cast iron
Weight	228 kg
Norm	EN124-2
Package	6 ks/pal
Load class	Heavy traffic load

cover without hinge, horizontal PUR shock-absorbing lining on frame, EPDM shock-absorbing lining on cover, without spring-loaded lid locking in frame

COVER:

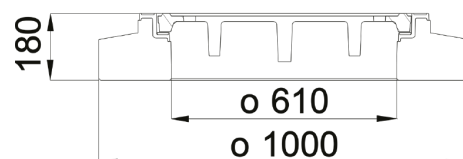
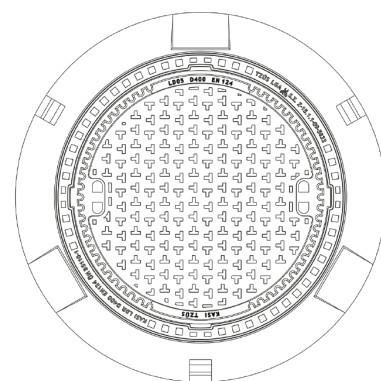
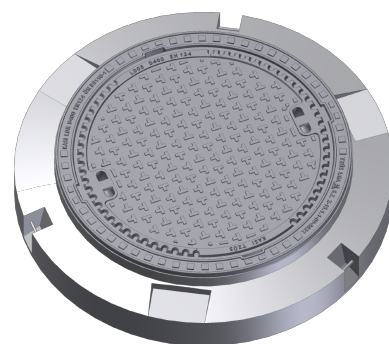
- | Cast iron without venting with anti-slip design.
- | Custom theme/logo option
- | Lid weight 83kg
- | EPDM damping insert - resistant to oils

FRAME:

- | Distribution frame 1000mm with mounting for catcher
- | Frame height 180 mm
- | Use with BAR-V and BAR adjustment rings
- | Integrated PUR damping insert with high resistance
- | Three handling hinges

OTHER:

- | The cover is supplied without surface treatment - painted variants can be ordered
- | Suitable for places with high traffic load
- | custom lid motif possible



CUSTOMER
SOLUTIONS



DAMPING INSERT



HATCH WITHOUT
HINGE

