

## Manhole cover without ventilation in the distribution frame

D400 - heavy traffic load

## Standard

|            |                            |
|------------|----------------------------|
| Code       | <b>KDJ09</b>               |
| Material   | <b>Concrete, Cast iron</b> |
| Weight     | <b>235 kg</b>              |
| Norm       | <b>DIN1229, EN124-2</b>    |
| Package    | <b>6 ks/pal</b>            |
| Load class | <b>Heavy traffic load</b>  |

cover without hinge, horizontal PUR shock-absorbing lining, without spring-loaded lid locking in frame

### COVER:

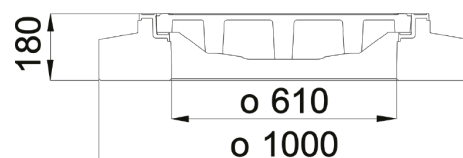
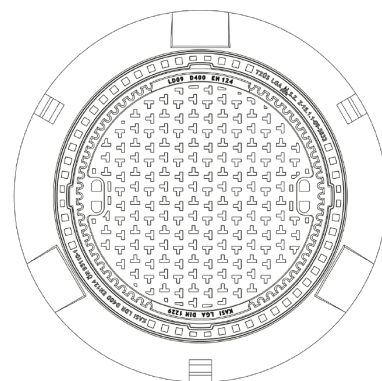
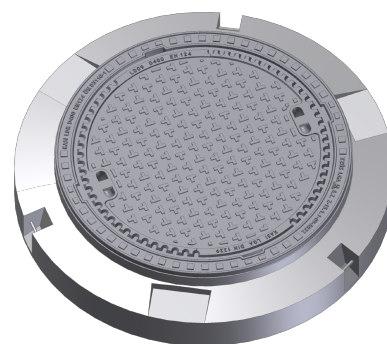
- | Cast iron without venting with anti-slip design.
- | Custom theme/logo option
- | Lid weight 90kg

### FRAME:

- | Distribution frame 1000mm with mounting for catcher
- | Frame height 180 mm
- | Use with BAR-V and BAR adjustment rings
- | Integrated PUR damping insert with high resistance
- | Three handling hinges

### OTHER:

- | The cover is supplied without surface treatment - painted variants can be ordered
- | Suitable for places with high traffic load
- | custom lid motif possible



CUSTOMER  
SOLUTIONS



DAMPING INSERT



HATCH WITHOUT  
HINGE

