

## Manhole cover without ventilation in a square frame

D400 - extreme traffic load

# Standard



Code	<b>KDC65CxxPCE</b>
Material	<b>Concrete, Cast iron</b>
Weight	<b>233 kg</b>
Norm	<b>EN124-2</b>
Package	<b>5 ks/pal</b>
Load class	<b>D400</b>
Traffic load	<b>Extreme traffic load</b>

cover without hinge, horizontal and vertical PUR shock-absorbing lining on lid, without spring-loaded lid locking in frame

### COVER:

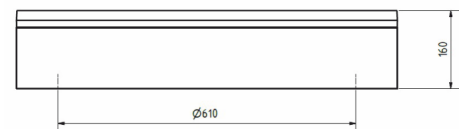
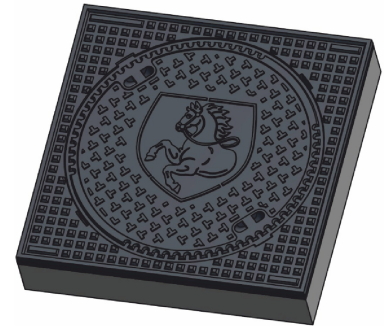
- | Integrated KASI-PUR damping insert with high resistance
- | Custom logo motif on the lid
- | Lid weight 83kg

### FRAME:

- | Frame height 160 mm

### OTHER:

- | The cover is supplied with a black finish
- | Suitable for places with extreme traffic load



CUSTOMER  
SOLUTIONS



DAMPING INSERT



HATCH WITHOUT  
HINGE

